

La Palma other Religious Items



240 St. Francis



202c \$5.00

Guardian Angel



210B

210A

Copinol Seed



Guadalupe Images



301



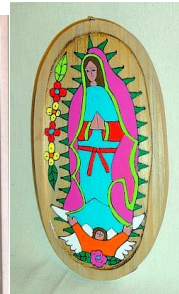
302



304



303



300B



300E



300F



339A



339B



306



309F

ASSORTED ARTICLES FROM LA PALMA

237A	Cross-On Copinol Seed-pendant	(1 1/2")	\$18.00 doz.
120B	Copinol seed w/religious images.Assorted	(1 1/2")	\$2.00
202C	Guardian Angel (with Boy or Girl)	(3 1/2" x 6 1/2")	\$5.00
240	Wall Plaque (outlined) St. Francis of Assisi	(10 1/2" x 10 1/2")	\$10.00
300B	Plaque-"Our Lady of Guadalupe"-Oval	(7" x 4")	\$7.50
300E	Painting-"Our Lady of Guadalupe"-Mini	(5" x 3")	\$5.50
300F	Plaque-"Our Lady of Guadalupe"-Large	(12 1/2" x 7")	\$15.00
301	Retablo-Our Lady of Peace	(11 1/2" x 5 1/2")	\$12.00
302	Retablo-St. Anthony	(11 1/4" x 5 1/2")	\$12.00
303	Painting on wood -St. Francis of Assisi	(11 1/2" x 9")	\$19.50
304	Retablo Father Serra	(11 1/4" x 5 1/2")	\$12.00
306	Plaque-"The Missionary"	(10" x 8 1/2")	\$13.00
309F	Plaque-"Christ and the Children	(8 1/2" x 9")	\$12.00
339A	Plaque-"Sermon on the Mount"-Small	(6 3/4" x 4")	\$7.00
339B	Plaque-"Sermon on the Mount"-Mini	(4 1/2" x 3")	\$5.50
340	Plaque-"Flight to Egypt"-Mini	(5 1/4" x 2 3/4")	\$5.50
210A	Noah's Ark-Medium	(4 3/4" x 4 1/4")	\$7.00
210B	Noah's Ark- Large	(8 x 10)	\$10.00

La Palma Last Suppers



123A	Last Supper in outline	(9¼" x 6")	\$9.50
126A	Last Supper scene plaque-Large	(18" x 9")	\$14.00
126B	Last Supper scene plaque-Medium	(11½" x 7")	\$10.50
126C	Last Supper scene plaque-Small	(10¾" x 4¾")	\$9.00
126D	Last Supper scene plaque-Med	(7½" x 3")	\$7.25
126E	Last Supper scene plaque-Hallelujah	(14" x 6½")	\$13.00
126F	Last Supper scene plaque-Larger mini	(8" x 4¾")	\$7.75

The Enchanting Folk Art of La Palma



La Palma is a town in the crisp mountains of Chalatenango, northern El Salvador, near the border with Honduras. Most of its residents are peasants-artists, who have created a unique style in the world of folk art.

It was the internationally acclaimed Salvadorean artist Fernando Llort who, in conjunction with the people of La Palma, first created this style, which continues to evolve.

Every La Palma item is carefully hand-painted or woven using locally available materials, and reflects the images and folklore of the region.

The artists pride themselves in creating designs and color patterns on the moment, and no two items are exactly alike, their images ever-changing.

DISTRIBUTED BY ARARA ENTERPRISES — SAN DIEGO, CALIFORNIA